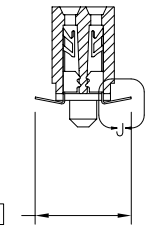
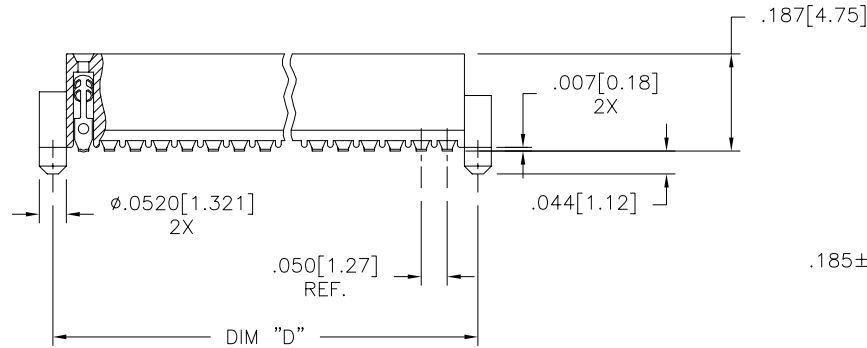
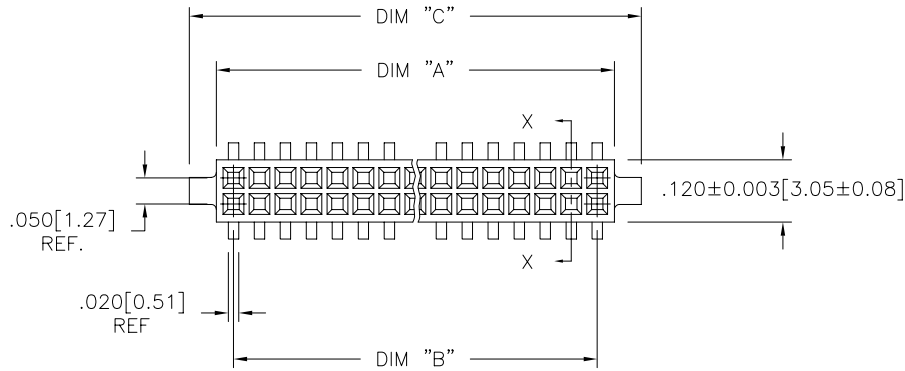
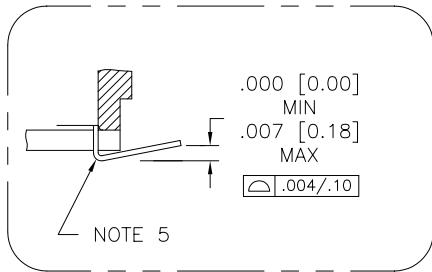


PRODUCT NUMBER
SEE TABLE



SECTION X-X



DETAIL J
SCALE 10/1

mat'l. code		surface		tolerance		projection		product family	
-		ISO 1302 ✓		ISO 406 ISO 1101				RIB CAGE	
ltr	ecn no	dr	date	tolerances unless otherwise specified				title	
Y	V02780	DLW	12/01/00	angles	linear			.050cc VERT. CARD CONN.	
AA	V10994	DLW	3/09/01			INCH/MM		SURF. MT. W/LOC. FEATURES	
AB	V11674	CRG	6/22/01	σ±2'		scale 3:1		dwg no	
AC	M05-0084	MHT	5/05/05	dr	M. CLOUSER	5/25/91		sheet 1 of 4 size	
AD	M06-0284	AEA	7/27/06	engr	B. BARUFFALO	5/25/91		87023 A3	
AE	M07-0267	MHT	6/08/07	chr	B. BARUFFALO	5/25/91		type	
AF	M07-0345	AGS	7/26/07	appd	B. BARUFFALO	5/25/91		Product Customer Drawing	
sheet	revision	AF	AF	AF	AF				
index	sheet	1	2	3	4				

PRODUCT NO.
87023 - XXX

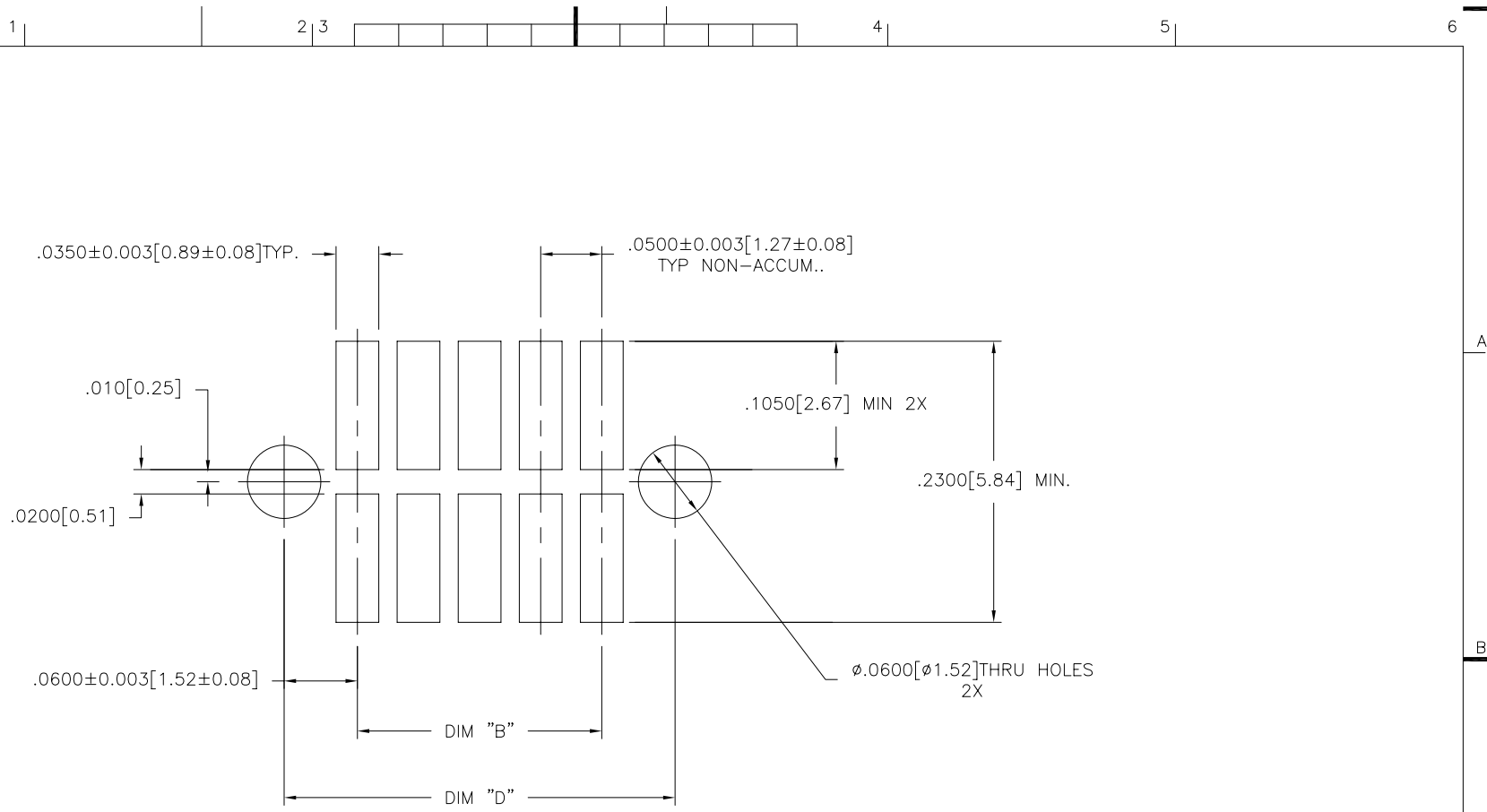


FIGURE A
RECOMMENDED
P.C.B. LAYOUT

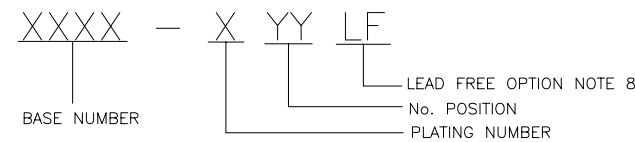


Copyright FCI

mat'l. code		surface		tolerance		projection		product family		
-		ISO 1302 ✓		ISO 406 ISO 1101				RIB CAGE		
ltr	ecn	no	dr	date		tolerances unless otherwise specified		title		
AF						angles linear xx ±.01/.3 xxx ±.005/.13 xxx ±.0020/.050		INCH/MM .050cc VERT. CARD CONN. SURF. MT. W/LOC. FEATURES		
						scale 3:1		dwg no sheet 2 of 4 size		
				dr M. CLOUSER 5/25/91				87023 A3		
				enrg B. BARUFFALO 5/25/91				type Product Customer Drawing		
				chr B. BARUFFALO 5/25/91						
				app B. BARUFFALO 5/25/91						
sheet index	revision sheet									

form: A3

PRODUCT NO. NOTE 8	SIZE	DIM A	DIM B	DIM C	DIM D	SPECIAL PACKAGING	TAPE WIDTH PITCH	PIECES PER REEL
87023-605	2 X 5	.266/6.756	.200/5.08	.370/9.398	.3200/8.128	NO	—	—
-610	2 X 10	.516/13.106	.450/11.43	.620/15.748	.5700/14.478	NOTE 6	24mm 12mm	750
-615	2 X 15	.766/19.456	.700/17.78	.870/22.098	.8200/20.828	NOTE 6	44mm 12mm	500
-620	2 X 20	1.016/25.806	.950/24.13	1.120/28.448	1.0700/27.178	NOTE 6 & 7	44mm 12mm	500
-625	2 X 25	1.266/32.156	1.200/30.48	1.370/34.798	1.3200/33.528	NOTE 6	56mm 12mm	500
-630	2 X 30	1.516/38.506	1.450/36.83	1.620/41.148	1.5700/39.878	NOTE 6 & 7	56mm 12mm	500
-635	2 X 35	1.766/44.856	1.700/43.18	1.870/47.498	1.8200/46.228	NO	—	—
-640	2 X 40	2.016/51.206	1.950/49.53	2.120/53.848	2.0700/52.578	NOTE 7	—	—
-645	2 X 45	2.266/57.556	2.200/55.88	2.370/60.198	2.3200/58.928	NO	—	—
-650	2 X 50	2.516/63.906	2.450/62.23	2.620/66.548	2.5700/65.278	NO	—	—
-905	2 X 5	.266/6.756	.200/5.08	.370/9.398	.3200/8.128	NO	—	—
-910	2 X 10	.516/13.106	.450/11.43	.620/15.748	.5700/14.478	NO	—	—
-915	2 X 15	.766/19.456	.700/17.78	.870/22.098	.8200/20.828	NO	—	—
-920	2 X 20	1.016/25.806	.950/24.13	1.120/28.448	1.0700/27.178	—	—	—
-925	2 X 25	1.266/32.156	1.200/30.48	1.370/34.798	1.3200/33.528	NO	—	—
-930	2 X 30	1.516/38.506	1.450/36.83	1.620/41.148	1.5700/39.878	NO	—	—
-935	2 X 35	1.766/44.856	1.700/43.18	1.870/47.498	1.8200/46.228	NO	—	—
-940	2 X 40	2.016/51.206	1.950/49.53	2.120/53.848	2.0700/52.578	NO	—	—
-945	2 X 45	2.266/57.556	2.200/55.88	2.370/60.198	2.3200/58.928	NO	—	—
87023-950	2 X 50	2.516/63.906	2.450/62.23	2.620/66.548	2.5700/65.278	NO	—	—



NOTES:

- ① HOUSING MATERIAL:
GLASS FILLED THERMOPLASTIC FLAME RETARDANT PER UL 94V-0
COLOR: BLACK
- ② TERMINAL MATERIAL: BeCu
- ③ TERMINAL PLATING:
LEAD FREE OPTION
-6XXLF- 30u"/.76u MIN HARD GOLD OVER Ni ON CONTACT ZONES.
100u"/2.54u MIN PURE TIN OVER Ni
IN SOLDERING ZONES, OTHERWISE GOLD FLASH OR UNPLATED.
-9XXLF- 60u"/1.52u MIN HARD GOLD ON CONTACT ZONES,
100u"/2.54u MIN PURE TIN OVER Ni
OVER Ni IN SOLDERING ZONES, OTHERWISE GOLD FLASH OR UNPLATED.
TIN LEAD OPTION
-6XX- 30u"/.76u MIN HARD GOLD OVER Ni ON CONTACT ZONES.
100u"/2.54u MIN SnPb OVER Ni
IN SOLDERING ZONES, OTHERWISE GOLD FLASH OR UNPLATED.
- 4 APPLICATION INFORMATION:
A. RECOMMENDED MOUNTING PAD PATTERN IS SHOWN IN FIGURE "A".
B. MATING PINS TO BE .0176/.447 TO .0181/.459 DIA.
C. MATING PIN TIPS TO BE IN TRUE POSITION TO MATING GRID WITHIN .006/.15 DIA.
D. SUGGESTED MATING PIN LENGTH .130/3.30 ±.010/.25.

- ⑤ LEAD TIPS TO BE ABOVE HEEL, UP TO .007/0.18 MAX. COPLANARITY TO BE MEASURED AT LOWEST POINT (HEEL).
- ⑥ ADD "TR" TO END OF DASH NUMBER FOR TAPE AND REEL PACKAGED WITH CAP. TOOLED ONLY FOR NOTED CONNECTORS.
- 7. ADD "CT" TO END OF DASH NUMBER FOR CONNECTOR WITH CAP FOR VACUUM PICKUP IN TUBE.
- ⑧ ADD LF SUFFIX AT THE END OF PART NUMBER FOR LEAD FREE OPTION.
- 9. THE HOUSING WILL WITHSTAND EXPOSURE TO 260°C PEAK TEMPERATURE FOR 20 SECONDS IN A CONVECTION, INFRA-RED OR VAPOR PHASE REFLOW OVEN. SEE APPLICATION NOTE/PROCEDURES IF THEY ARE AVAILABLE.
- ⑩ THIS PRODUCT MEETS EUROPEAN UNION DIRECTIVES AND OTHER COUNTRY REGULATION AS DESCRIBED IN GS-22-008.

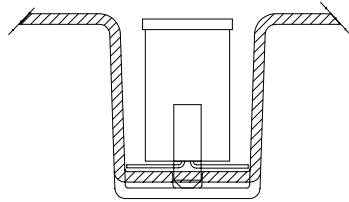
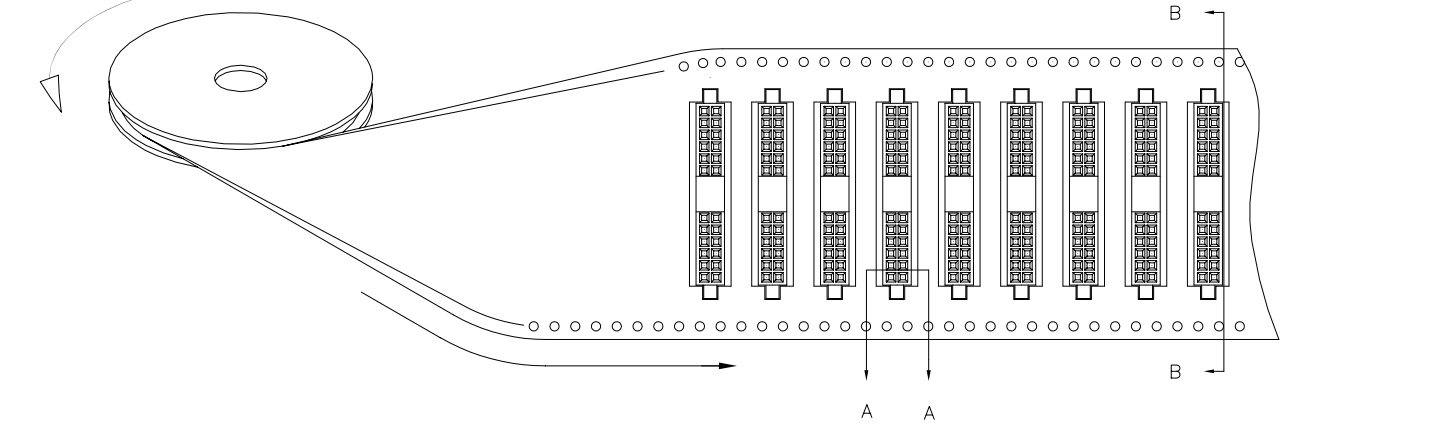
mat'l. code		surface		tolerance		projection		product family		
-		ISO 1302 ✓		ISO 406 ISO 1101				RIB CAGE		
ltr	ecn	no	dr	date		tolerances unless otherwise specified		title		
AF						angles linear xx ±.01/.3 xxx ±.005/.13 0±2' xxx ±.0020/.050		.050cc VERT. CARD CONN. SURF. MT. W/LOC. FEATURES		
				dr		M. CLOUSER 5/25/91		dwg no		
				engr		B. BARUFFALO 5/25/91		sheet 3 of 4 size		
				chr		B. BARUFFALO 5/25/91		87023 A3		
				app		B. BARUFFALO 5/25/91		type Product Customer Drawing		
sheet	revision									
index	sheet									

PRODUCT NUMBER
SEE TABLE

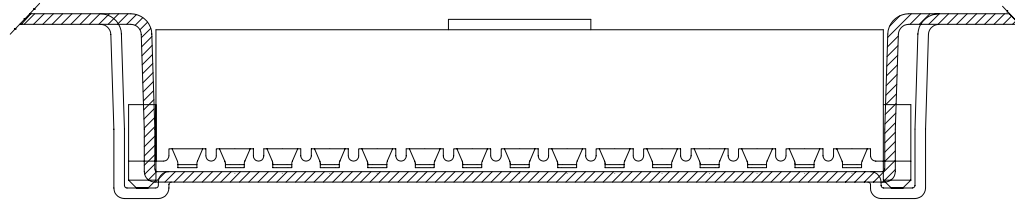
UNREELING
DIRECTION

REFERENCE ONLY

TAPE WIDTH'S 32mm AND ABOVE HAS BOTH FEED TRACKS,
BELOW 32mm HAS TOP FEED TRACK ONLY.



SECTION A-A



SECTION B-B



FCIconnect.com

Copyright FCI

mat'l. code		surface		tolerance		projection		product family	
-		ISO 1302 ✓		ISO 406 ISO 1101				RIB CAGE	
ltr		ecn no		date		tolerances unless otherwise specified		title	
AF						angles linear xx ±.01/.3 xxx ±.005/.13 xxxx ±.0020/.050		.050cc VERT. CARD CONN. SURF. MT. W/LOC. FEATURES	
						scale 3:1			
		dr		M. CLOUSER 5/25/91				sheet 4 of 4 size 87023 A3	
		engr		B. BARUFFALO 5/25/91				type Product Customer Drawing	
		chr		B. BARUFFALO 5/25/91					
		app		B. BARUFFALO 5/25/91					
sheet index		revision sheet							